



# Puli-Jet Gentle

## Effective Disinfection For Your Suction System.

Daily disinfection of your suction system is vital to keep your suction lines clean and maintain your equipment and suction unit. Puli-Jet Gentle's strength as a disinfectant means that it kills bacteria, helping to maintain a safer work environment.

Puli-Jet Gentle is suitable for the following dental suction systems:

- Semi-wet / semi-dry systems (i.e. Turbo SMART, Turbo Jet)
- Dry suction systems (i.e. with separator in the surgery)
- Wet suction systems (i.e. Cattani wet pumps)

Puli-Jet Gentle has a simple and accurate dispensing chamber, making it easier to measure the solution and to pour into the Pulse Cleaner. For simplicity and accuracy, Cattani recommends the use of their 'Pulse Cleaner' to automatically aspirate air and fluids to create turbulence for effective disinfection.

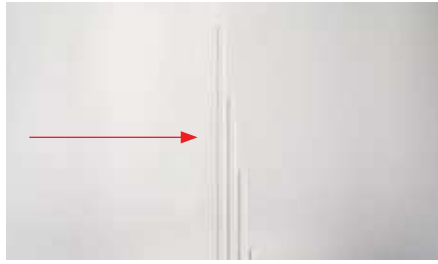
**1 litre bottle makes  
30 x 2.5 litres of working  
solution**

Dilute 30ml of Puli-Jet Gentle to 2.5 litres of warm water for the correct concentration.

## Directions For Use:



1. Fill the Pulse Cleaner with 2.5 litres of warm water.



2. Each line on the inside of the Pulse Cleaner represents 1 litre, so fill it up to halfway between the second and third line.



3. Place the Puli-Jet Gentle on a level and steady surface.



4. Slightly unscrew the red cap (i.e. 1 - 2 revolutions), but do not completely unscrew it.



5. Squeeze the bottle softly to force solution into the measuring dispenser.



6. Continue to squeeze until the solution reaches the 30ml mark.



7. If too much solution has entered the dispensing chamber, it can be poured back into the main bottle by tipping the bottle towards the small tube on the side.



8. Unscrew and remove the red cap. Pour the solution from the dispensing chamber into the full Pulse Cleaner. Take care to not allow more solution from the main bottle to flow into the dispensing chamber.



9. With a disposable cloth, wipe any drips of solution from the bottle (and then dispose of the cloth).



10. Connect suction hoses to Pulse Cleaner – adaptors may be required as hose sizes vary. Pulsed aspiration of the solution will happen automatically.

11. Once pulsing has stopped please remove hoses from the Pulse Cleaner. Please note a small amount of solution will remain in the bottom of the cleaner. This can be poured down the spittoon or aspirated manually.

12. It is highly recommended to continue aspirating air for several minutes before shutting down the suction system. This ensures that the disinfectant reaches the suction unit in the plant room.

Puli-jet Gentle leaves a residue on the inside of pipes and suction tubes in order to stop bacterial growth on these surfaces. This is the reason that you may sometimes find the surface of a tube to be 'oily'. This is completely normal and the product is designed to do this.